



Grid Dish Parabolic Antenna 5150 to 5850 MHz Operation

Features

- 22dBi , 26dBi and 29dBi Models Available
- Rugged and Weatherproof
- Ultra Low Wind Loading and Low Visual Impact
- Vertical or Horizontal Polarization
- Type N Female Connector
- Super HD Bracket models available for greater stability



GD58-22 VPOL

Applications

- 5GHz Wireless LAN Applications
- Point to Point Backhaul

Description

The 5GHz parabolic grid directional antennas offered by Pacific Wireless utilize a unique patented parabolic grid design with compact high performance feed. The antennas are constructed of welded steel wires which are galvanized and then powder coat painted with a light gray epoxy paint. The wire grid semi-parabolic design offers unsurpassed low wind loading while maintaining good RF performance. The compact low visual impact attractive styling blends well in almost any application. Mounting is simplified with the Pacific Wireless bracket system made of galvanized steel with stainless steel hardware. The antenna comes with a bulkhead N Female connector standard.

Specifications

Parameter	Model	Min	Typ	Max	Units
<i>Frequency Range</i>	GD58	5725		5850	MHz
	GD57	5470		5725	
	GD53	5150		5350	
<i>Gain</i>	GD58-22		22		dBi
	GD58-26		26		
	GD58-29		29		
	GD5x-21		21		
	GD5x-25		25		
	GD5x-28		28		
<i>Horizontal Beamwidth</i>	GD5x-22/21		10		Deg
	GD5x-26/25		6		
	GD5x-29/28		4		
<i>Vertical Beamwidth</i>	GD5x-22/21		11		Deg
	GD5x-26/25		6		
	GD5x-29/28		5		
<i>Front to Back</i>	GD5x-22/21	25			dB
	GD5x-26/25	30			
	GD5x-29/28	25			
<i>VSWR</i>			1.5:1		
<i>Impedance</i>			50		OHM
<i>Input Power</i>				100	W
<i>Operating Temp</i>		-40		+70	Deg C
<i>Pole Size</i>		1" (25)		2" (50)	In (mm)
<i>Weight</i>	GD5x-22/21		3 (1.4)		Lbs. (kg)
	GD5x-26/25		6 (2.7)		

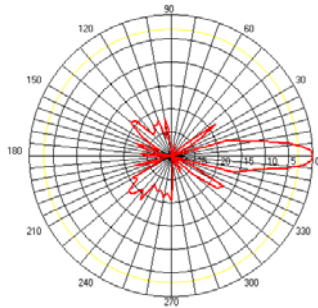
Notes:

- All shipments F.O.B. Bluffdale, UT 84065

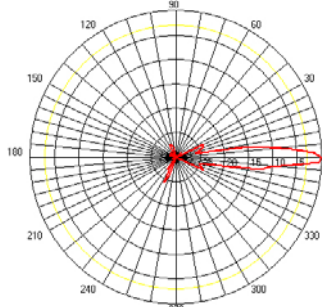
Parameter	Model	Min	Typ	Max	Units
	GD5x-29/28		11 (5)		
<i>Dimension (W x L)</i>	GD5x-22/21	11.8" x 15.7" (300 x 400)			In (mm)
	GD5x-26/25	16.8" x 24" (427 x 610)			
	GD5x-29/28	28.5" x 36" (724 x 914)			
<i>Bracket Tilt</i>		+/-45			Deg

<i>Wind Loading</i>	100 MPH	125 MPH	100MPH with ½" Radial Ice
GD58-22	10	15.6	48
GD58-26	20	31	99
GD58-29	41	64	257

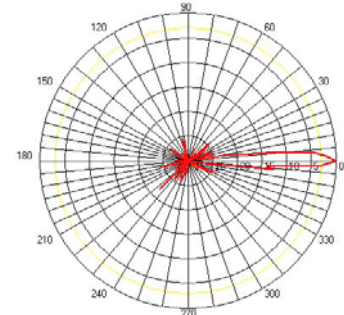
Antenna Patterns @ 5.8GHz



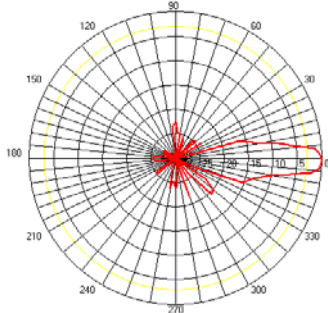
GD58-22 HPOL



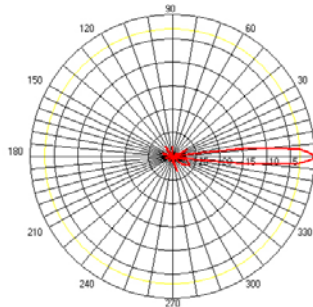
GD58-26 HPOL



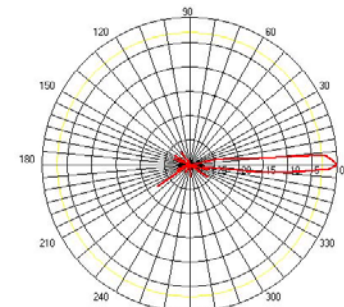
GD58-29 HPOL



GD58-22 VPOL



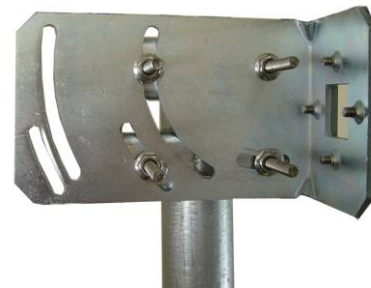
GD58-26 VPOL



GD58-29 VPOL

System Ordering:

- GD58-22** 5.7-5.8GHz 22dBi Directional Antenna
- *GD58-26** 5.7-5.8GHz 26dBi Directional Antenna
- *GD58-29** 5.7-5.8GHz 29dBi Directional Antenna
- GD57-21** 5.4-5.7GHz 21dBi Directional Antenna
- *GD57-25** 5.4-5.7GHz 25dBi Directional Antenna
- *GD57-28** 5.4-5.7GHz 28dBi Directional Antenna
- GD53-21** 5.1-5.3GHz 21dBi Directional Antenna
- *GD53-25** 5.1-5.3GHz 25dBi Directional Antenna
- *GD53-28** 5.1-5.3GHz 28dBi Directional Antenna



*Super HD Bracket System Now Available for Large and Medium Grid. Add "HD" as prefix to Part Number Example: HDGD58-29

For further information contact:



Pacific Wireless

14575 South Center Point Way
Bluffdale, UT 84065
TEL (801) 572-3024
FAX (801) 572-3025
www.pacwireless.com